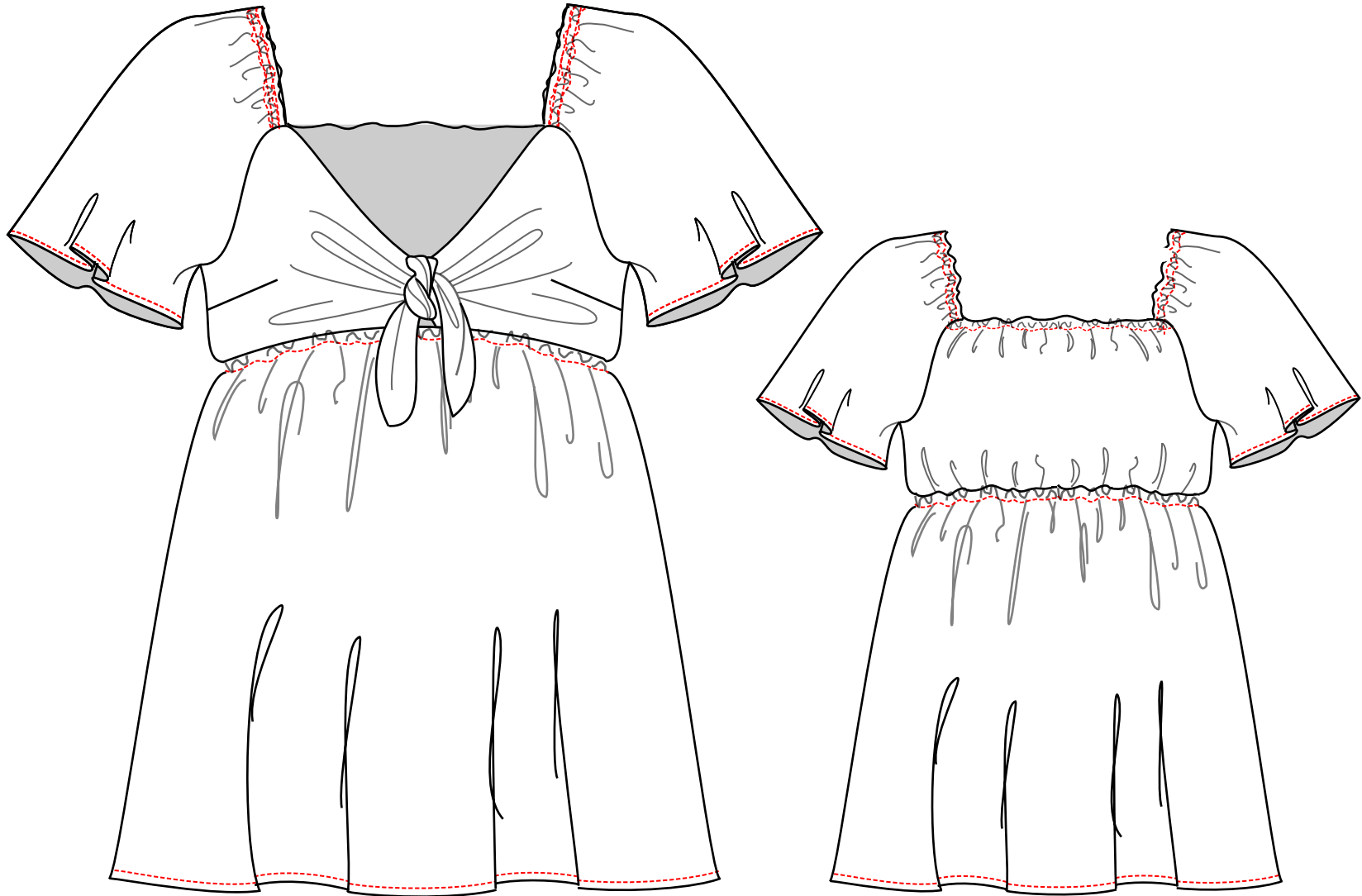




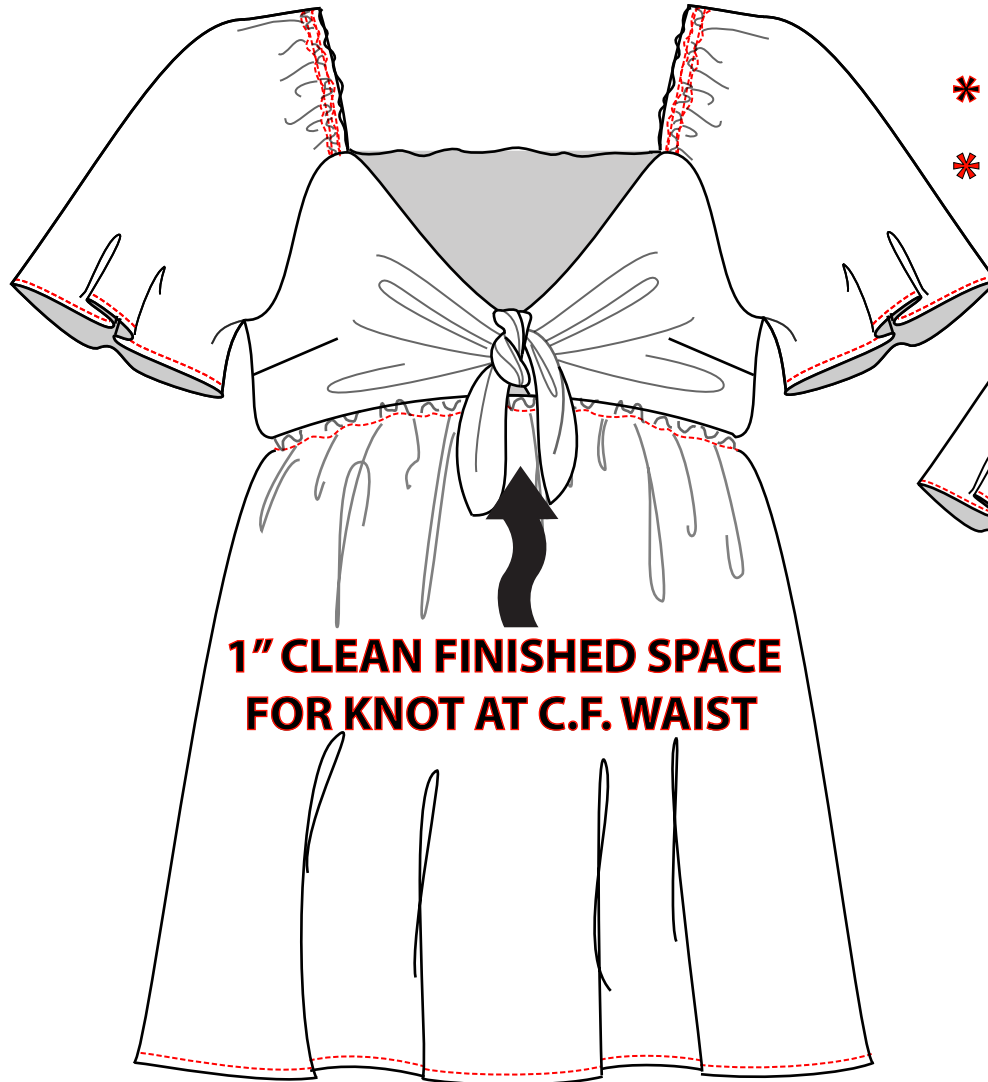
**OM-330800**  
**PTRN SNT AWB#512358**



**OM-330800**

**PTRN SNT AWB#512358**

**CLEAN FINISH LINED FRONT BODICES  
FRM SHLDRS TO SKIRT SEAM**



**1" CLEAN FINISHED SPACE  
FOR KNOT AT C.F. WAIST**

**\* 3/8" ELASTIC IN SHLDRS  
\* .25" ELASTIC IN BK NECK  
+ WAIST**



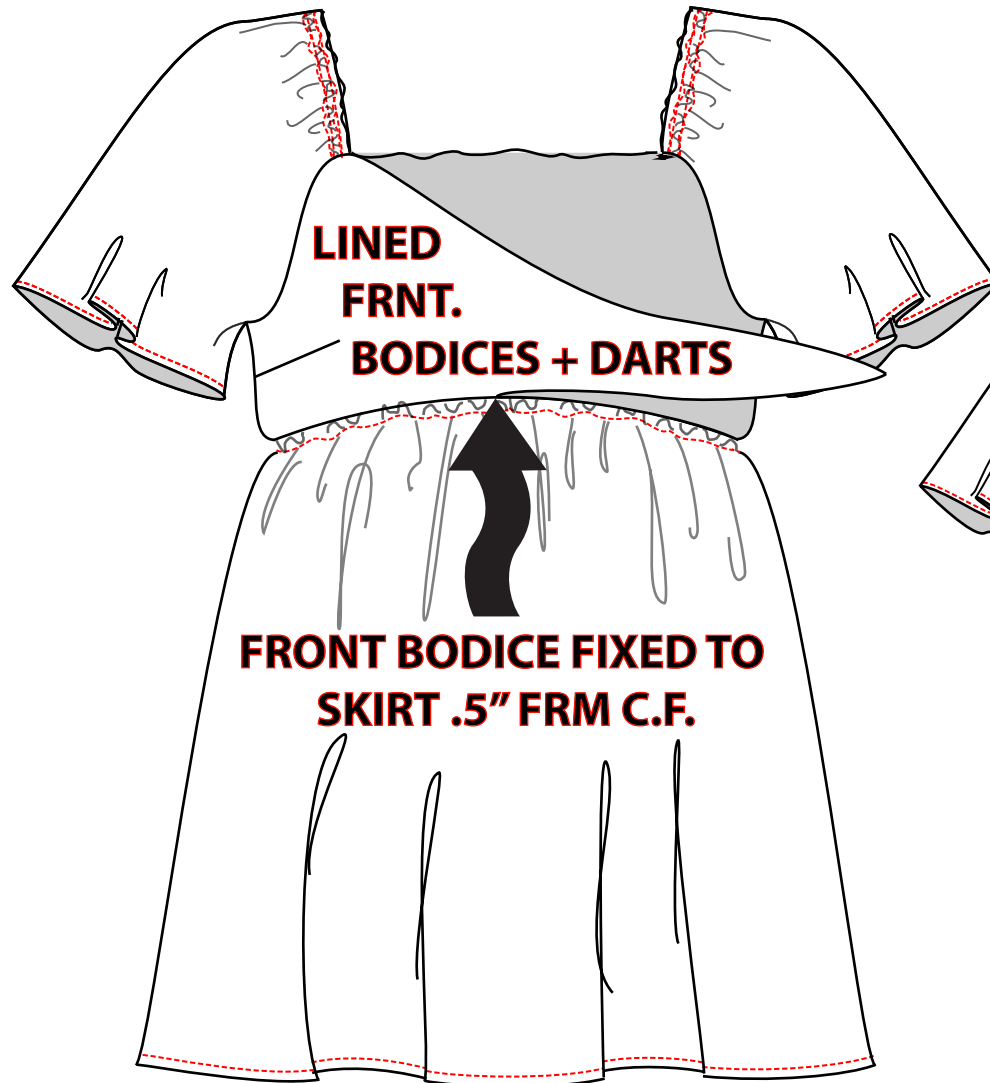
**NO SMOCKING**

**GARMENT CONSTRUCTION AS SAMPLE**

**OM-330800**

**PTRN SNT AWB#512358**

**3/8" x 11" ELASTIC IN SLVS**  
**ACROSS SHLDRS AS SAMPLE**



***.25" x 6" ELASTIC  
IN BACK NECK***



***.25" x 30" ELASTIC IN WAIST TUNNEL***





**330800 SLV AT**  
**UNDERARM**

1. DO NOT STICH FROM  
SIDE SEAM TO UNDERARM  
TO SLV HEM
2. CLOSE SIDE SEAM
3. CLOSE UNDERARM
4. STITCH SLV TO ARMHOLE
5. FIX SLV TO ARMHOLES  
AT NECK







↑ ADD MARGIN FOR  
3/8" x 6.5"  
FINISHED

330800

BK BODICE

ADD SEAM MARGINS

C.B. ON FOLD



FRNT

330800  
SLEEVE

ADD SEAM  
MARGINS  
+  
HEM

ADD MARGIN  
FOR  $3/8"$

## ELASTIC SHEARS

BK



ADD SEAM MARGINS FOR  
3/8" ELASTIC

CLEAN FINISH  
CF. 1" SPACE

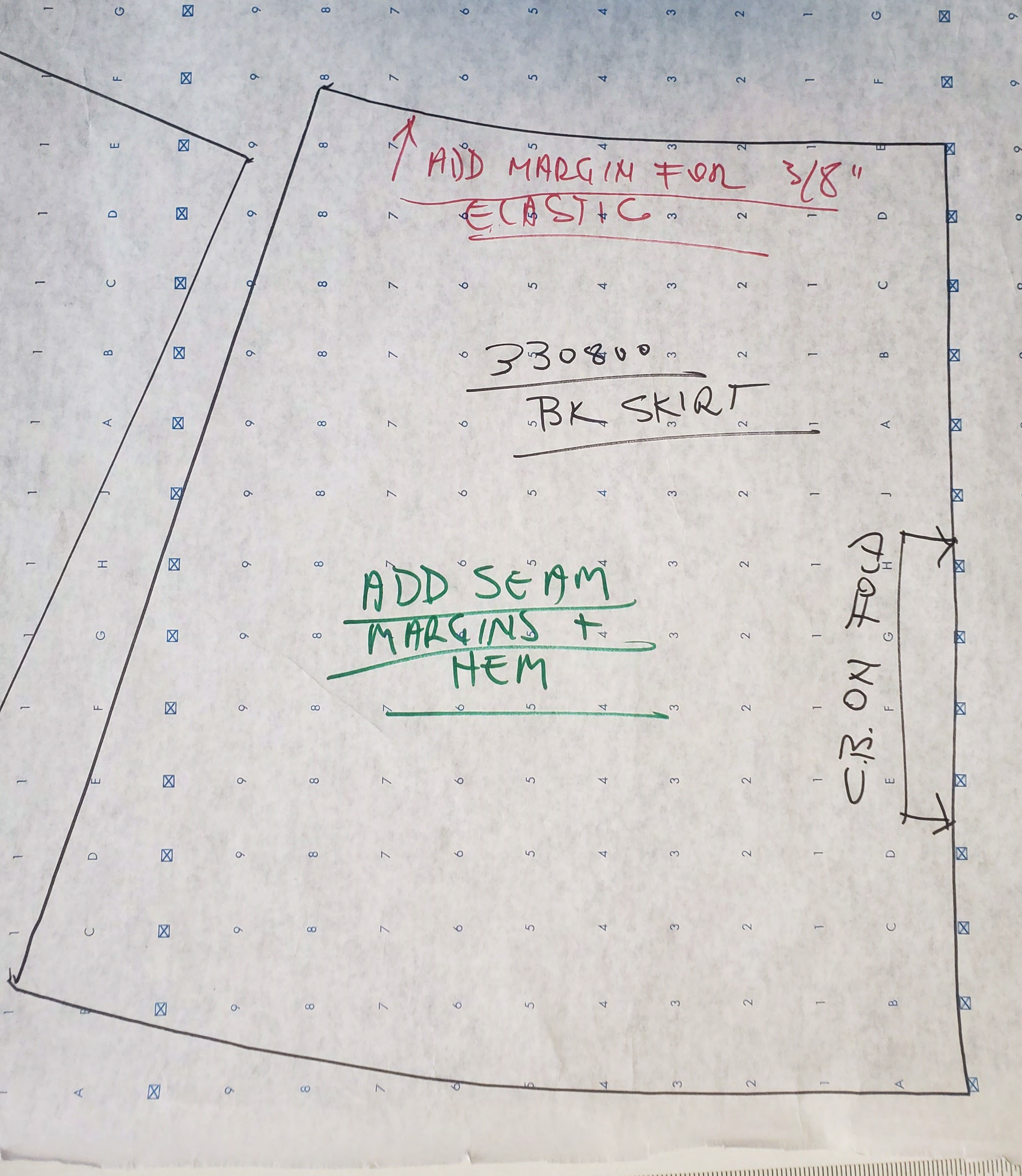
330800

PRINT SKIRT

ADD SEAM  
MARGINS +  
HEM

CF. ON FOLD





ADD MARGIN FOR ELASTIC 3/8"

330800  
BK SKIRT

ADD SEAM MARGINS + HEM

C.B. ON FOLD



<b>28-Nov-23</b>	<b>APPROVED SPECS</b>			
<b>GRADING BASED ON PRECEDING SIZE</b>				
<b>OM 330800 APPROVAL (SNT PTRN+SMPL AWB#512358)</b>	<b>S</b>	<b>M</b>	<b>L</b>	<b>XL</b>
SIDE NECK LENGTH CROSS SHLDRS FRM FRNT ARMHOLE TO BK 3/8" ELASTIC RELAXED	-1/4	10	+1/4	+1/4
SIDE NK LGTH CRSS SHLDRS FRM FRNT ARMHOLE TO BK ALONG EDGE 3/8" ELASTIC EXTND'D	-1/4	16 1/2	+1/4	+1/4
BACK NECK WIDTH STRAIGHT ACROSS FROM ARMHOLES 1/4" ELASTIC RELAXED	-1/4	6 1/2	+1/4	+1/4
BACK NECK WIDTH STRAIGHT ACROSS FROM ARMHOLES 1/4" ELASTIC EXTND'D	-1/4	9 1/2	+1/4	+1/4
C.F.L FROM FRONT BODICE SIDE NECK TO WAIST SEAM	-1/8	9	+1/8	+1/8
C.B.L. FROM NECK EDGE TO WAIST	-1/8	6	+1/8	+1/8
SIDSEAM FROM ARMHOLE TO WAIST	-1/8	3	+1/8	+1/8
FRONT ARMHOLE ALONG CURVE	-1/2	7	+3/4	+3/4
BACK ARMHOLE ALONG CURVE	-1/2	5 3/4	+3/4	+3/4
BUST DART BELOW ARMHOLES	1			
BUST DART WIDTH ON FOLD x LENGTH	-0 x -1/4	1 x 4 3/4	+0 x +3/8	+0 x +3/8
BUST DART POINT BELOW ARMHOLE	3 1/2			
BACK CHEST WIDTH STRAIGHT ACROSS FRM ARMHOLE BTM EDGES	-1	19	+1 1/2	+1 1/2
FRNT BODICE LENGTH FROM SIDE SEAM AT WAIST TO TIE POINT	-1/2	25	+3/4	+3/4
FRONT BODICE TIE LENGTH FROM C.F. OPENING TO TIE POINT	14 1/4			
FRONT BODICE WAIST LENGTH FRM SIDSEAM TO C.FRNT OPENING RELAXED	-1/2	8	+3/4	+3/4
FRONT BODICE WAIST LENGTH FRM SIDSEAM TO C.FRNT OPENING EXTENDED	-1/2	10 1/2	+3/4	+3/4
C.F. OPENING EXTENDED	1			
FRONT SKIRT WAIST FRM SIDSEAM TO SIDSEAM 1/4" ELASTIC EXTENDED	-1	22	+1 1/2	+1 1/2
FRONT SKIRT WAIST FRM SIDSEAM TO SIDSEAM 1/4" ELASTIC RELAXED	-1	17	+1 1/2	+1 1/2
BACK BODICE WAIST 1/4" ELASTIC EXTENDED	-1	18	+1 1/2	+1 1/2
BACK BODICE WAIST 1/4" ELASTIC RELAXED	-1	14	+1 1/2	+1 1/2
BACK SKIRT WAIST STRAIGHT ACROSS 1/4" ELASTIC EXTENDED	-1	18	+1 1/2	+1 1/2
BACK SKIRT WAIST STRAIGHT ACROSS 1/4" ELASTIC RELAXED	-1	14	+1 1/2	+1 1/2
TOTAL WAIST WIDTH FLAT STRAIGHT CROSS 1/4" ELASTIC RELAXED	-1	15 1/2	+1 1/2	+1 1/2
TOTAL WAIST WIDTH FLAT STRAIGHT CROSS 1/4" ELASTIC EXTENDED	-1	20	+1 1/2	+1 1/2
SKIRT LENGTH AT C.F.	-1/4	16	+1/4	+1/4
SKIRT LENGTH AT SIDE SEAMS	-1/4	13	+1/4	+1/4
SKIRT LENGTH AT C.B.	-1/4	13	+1/4	+1/4
FRONT SKIRT BTM WIDTH FLAT STRAIGHT ACROSS	-1	32	+1 1/2	+1 1/2
BACK SKIRT BTM WIDTH FLAT STRAIGHT ACROSS	-1	26	+1 1/2	+1 1/2
BTM WDTN FLAT STRAIGHT ACROSS FROM SIDSEAMS	-1	29	+1 1/2	+1 1/2
SLEEVE LENGTH FRM SHLDR HIGH PT	+3/8	12	+1/2	+1/2
SLEEVE LGTH AT UNDERARM	+1/8	2	+1/8	+1/8
SLEEVE OPENING FLAT FROM UNDERARM TO CTR FOLD	+3/8	10 1/4	+1/2	+1/2